

PACKAGE 1

1,100.71 Acres, more or less



SALE DATE: JANUARY 16, 2020

**Neill Forestry Consultants, in association with
Greg Rich & Associates Real Estate
Contact: 870-234-1167**

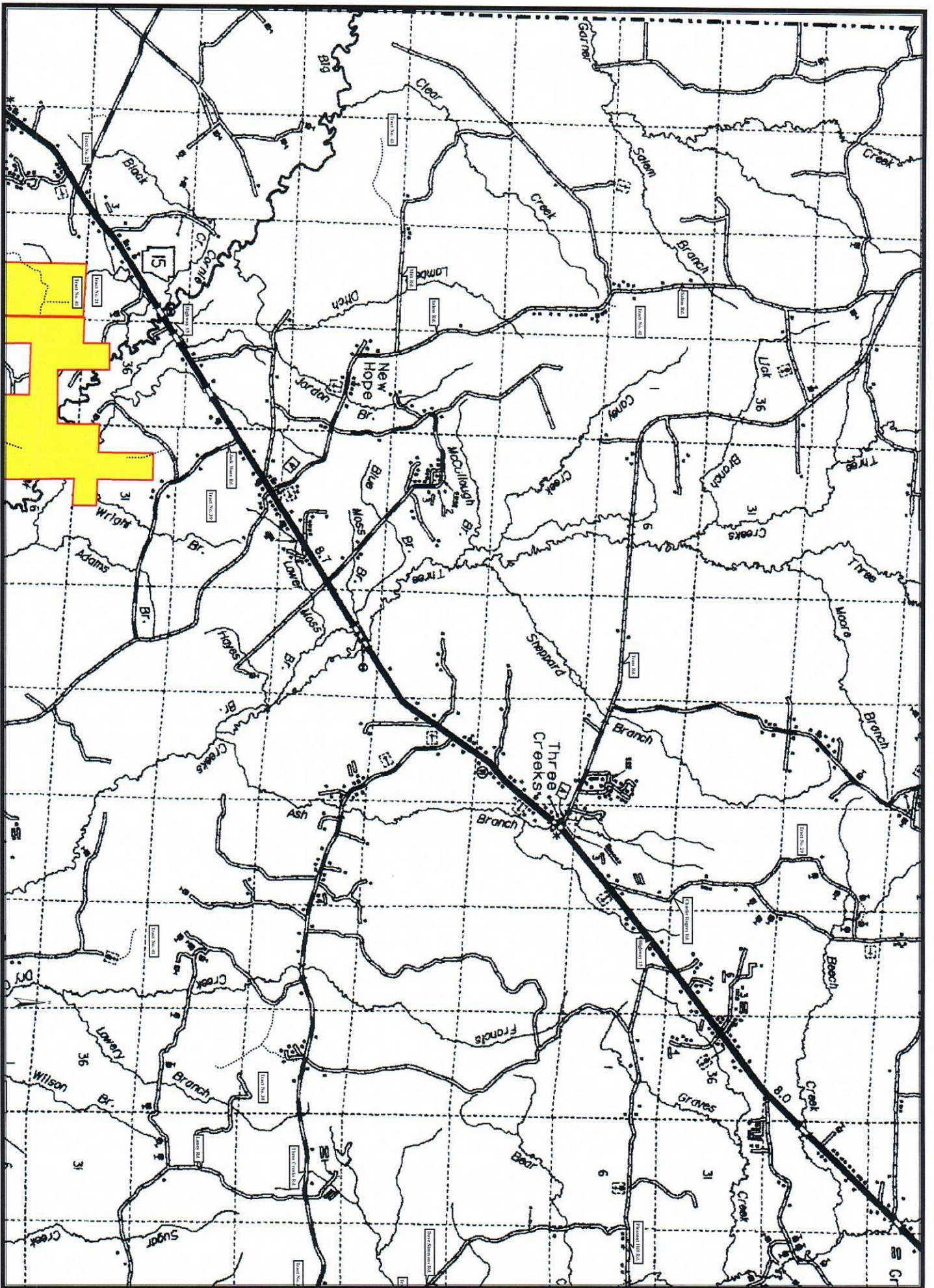
LEGAL DESCRIPTIONS
PACKAGE 1
Draper Land and Timber Company, L.L.C.
Union County, Arkansas
1,100.71 Acres, more or less

Tract No.	Legal Descriptions	Acres
No. 21	E½ Section 2, Township 20 South, Range 18 West.	261.13
No. 40	Lot 6 in NW¼, Lot 3, Lot 5, Lot 6 and Lot 7 in SW¼ Section 31, Township 19 South, Range 17 West; SESW Section 36, Township 19 South, Range 18 West; Lot 3, Lot 4, Lot 5 and Lot 6 in NW¼; Lot 2, Lot 3 in SW¼ Section 6, Township 20 South, Range 17 West; S½ NE¼, E½ NW¼, W½ W½, and E½ SE¼ Section 1, Township 20 South, Range 18 West.	839.58
Total		1,100.71

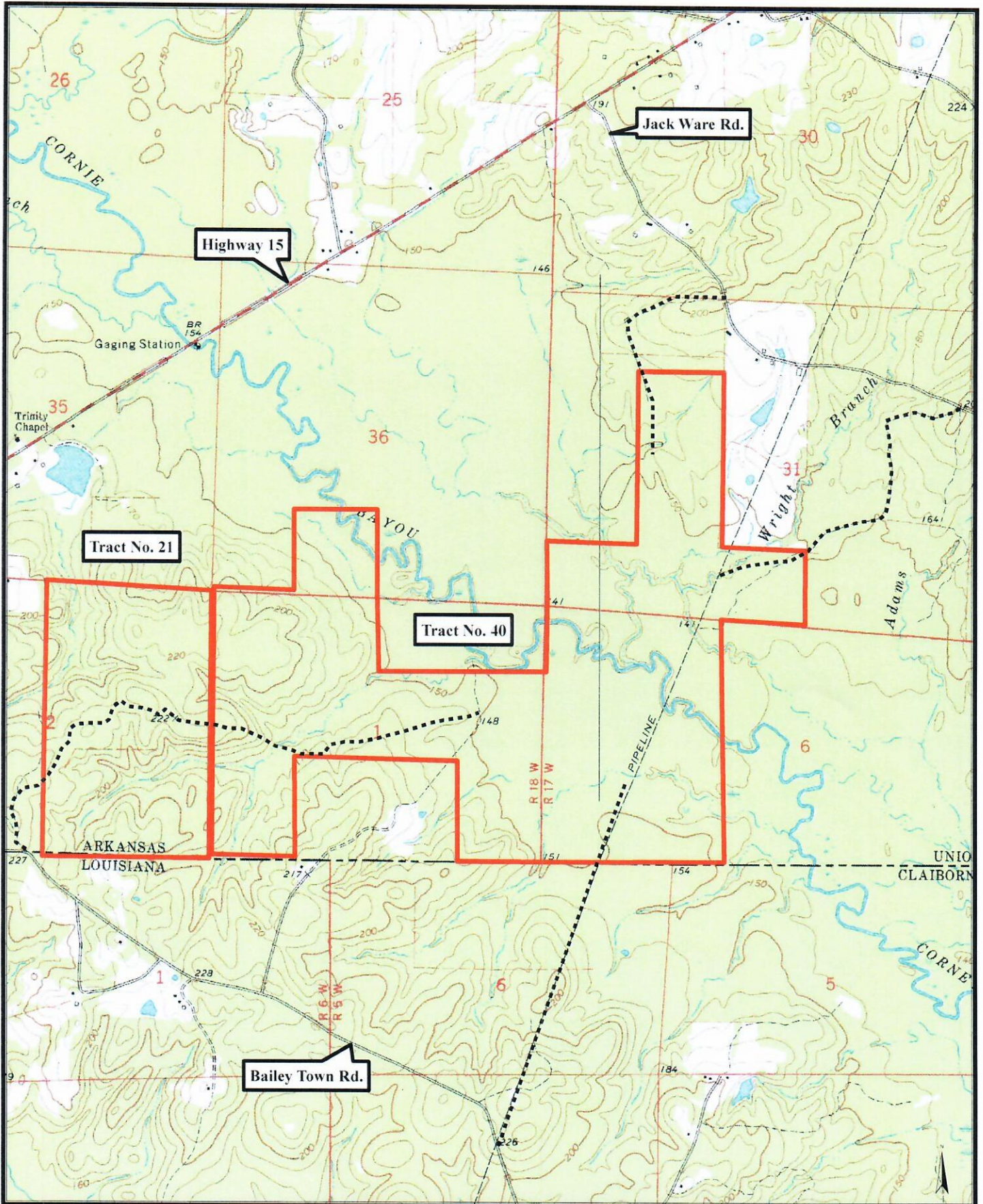
**Draper Land and Timber Company, L.L.C.
PACKAGE 1**

1,100.71 Acres, more or less.

Tract No.	Sec.	Twp.	Rng.	Acres	Pine Sawlogs (Bd. Ft.) Doyle Scale	Red Oak Sawlogs (Bd. Ft.) Doyle Scale	White Oak Sawlogs (Bd. Ft.) Doyle Scale	Gum Sawlogs (Bd. Ft.) Doyle Scale	Misc. Hardwood Sawlogs (Bd. Ft.) Doyle Scale	Pine Pulpwood (Tons)	Hardwood Pulpwood (Tons)	Pine Land Acres	Bottomland Acres	Non-Productive Acres
21	2	20S	18W	261.13	1,246,339	-	-	-	-	4,183	-	261.13	-	-
	31	19S	17W											
	36	19S	18W											
	6	20S	17W											
40	1	20S	18W	839.58	1,229,468	1,013,312	220,189	463,328	97,216	8,103	9,945	375.58	464.00	-
TOTALS				1,100.71	2,475,807	1,013,312	220,189	463,328	97,216	12,286	9,945	636.71	464.00	-



PACKAGE 1



1 inch = 2,000 feet