

PACKAGE 5

384.77 Acres, more or less



SALE DATE: JANUARY 16, 2020

Neill Forestry Consultants, in association with
Greg Rich & Associates Real Estate
Contact: 870-234-1167

LEGAL DESCRIPTIONS
PACKAGE 5
Draper Land and Timber Company, L.L.C.
Ouachita and Union Counties, Arkansas
384.77 Acres, more or less

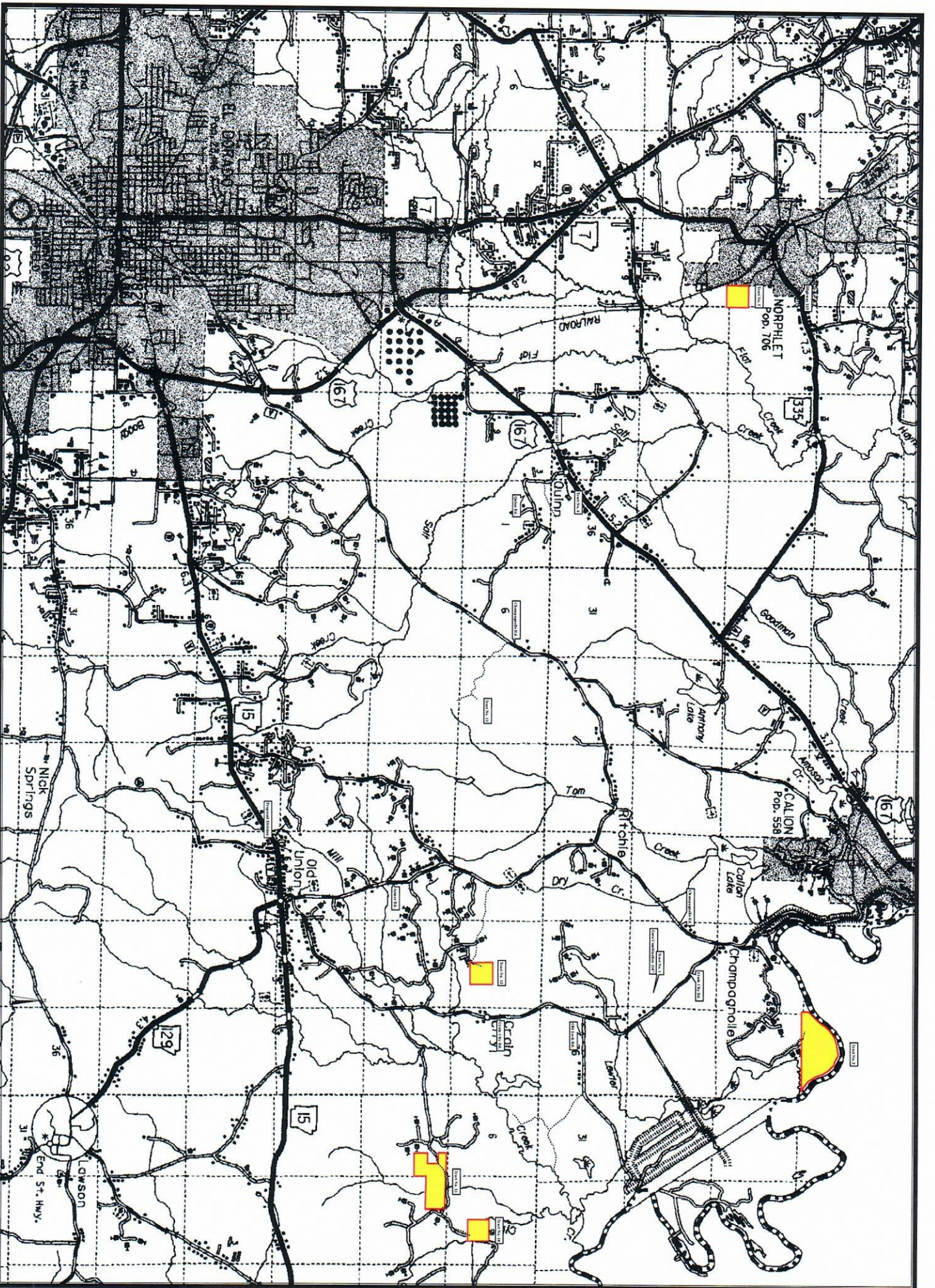
Tract No.	Legal Descriptions	Acres
No. 2	S½ on right bank of Ouachita River Section 13, Township 16 South, Range 14 West.	156.77
No. 5	SESE Section 21, Township 16 South, Range 15 West.	40.00
No. 10	NWSE Section 5, Township 17 South, Range 13 West.	40.00
No. 11	NENE less 12 acres in Southwest corner 263 yards North and South by 220 yards East and West and N½ SENE Section 7; W½ NENW and NWNW Section 8, all in Township 17 South, Range 13 West.	108.00
No. 12	NWSE Section 2, Township 17 South, Range 14 West.	40.00
Total		384.77

Draper Land and Timber Company, L.L.C.

PACKAGE 5

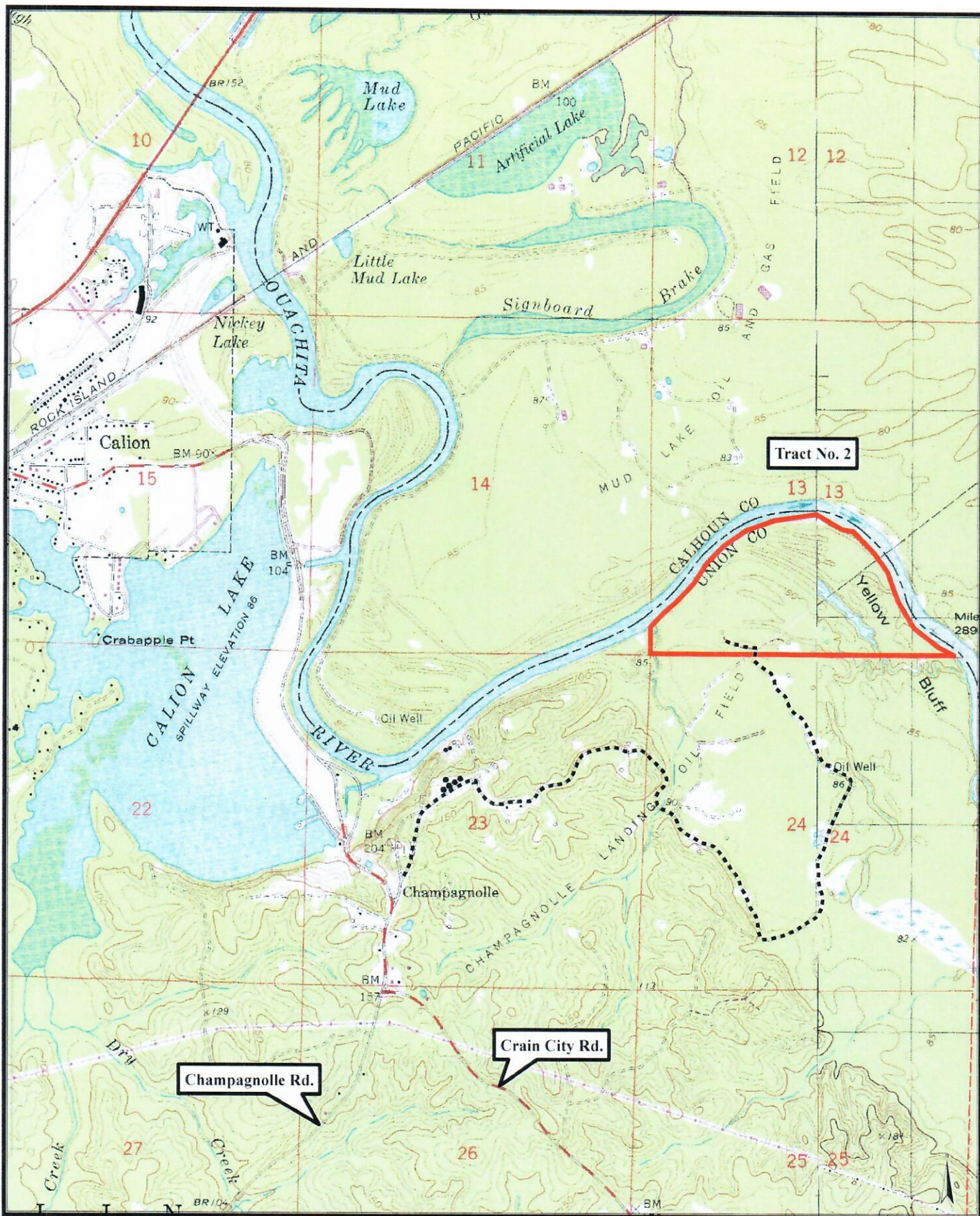
384.77 Acres, more or less.

Tract No.	Sec.	Twp.	Rng.	Acres	Pine Sawlogs (Bd. Ft.) Doyle Scale	Red Oak Sawlogs (Bd. Ft.) Doyle Scale	White Oak Sawlogs (Bd. Ft.) Doyle Scale	Gum Sawlogs (Bd. Ft.) Doyle Scale	Misc. Hardwood Sawlogs (Bd. Ft.) Doyle Scale	Pine Pulpwood (Tons)	Hardwood Pulpwood (Tons)	Pine Acres	Bottomland Acres	Non-Productive Acres
2	13	16S	14W	156.77	17,493	110,572	40,426	221,037	134,636	-	1,613	-	156.77	-
5	21	16S	15W	40.00	275,120	-	-	-	-	119	27	40.00	-	-
10	5	17S	13W	40.00	236,616	-	-	-	-	337	63	40.00	-	-
11	7, 8	17S	13W	108.00	502,569	16,651	2,636	5,986	11,075	275	787	108.00	-	-
12	2	17S	14W	40.00	164,074	13,632	1,541	-	-	175	48	40.00	-	-
TOTALS				384.77	1,195,872	140,855	44,603	227,023	145,711	906	2,538	228.00	156.77	-



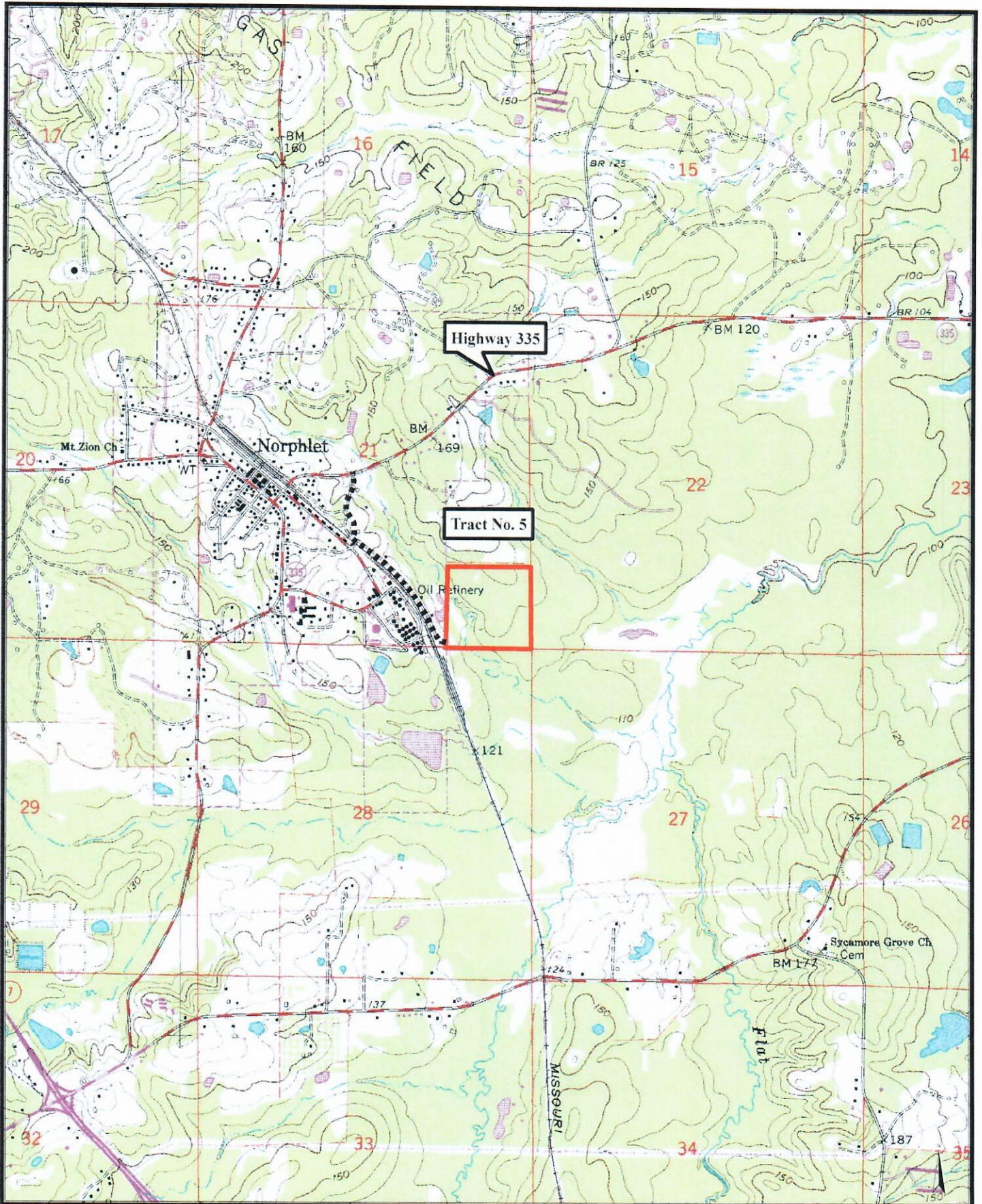
1 inch = 7,530 feet

PACKAGE 5



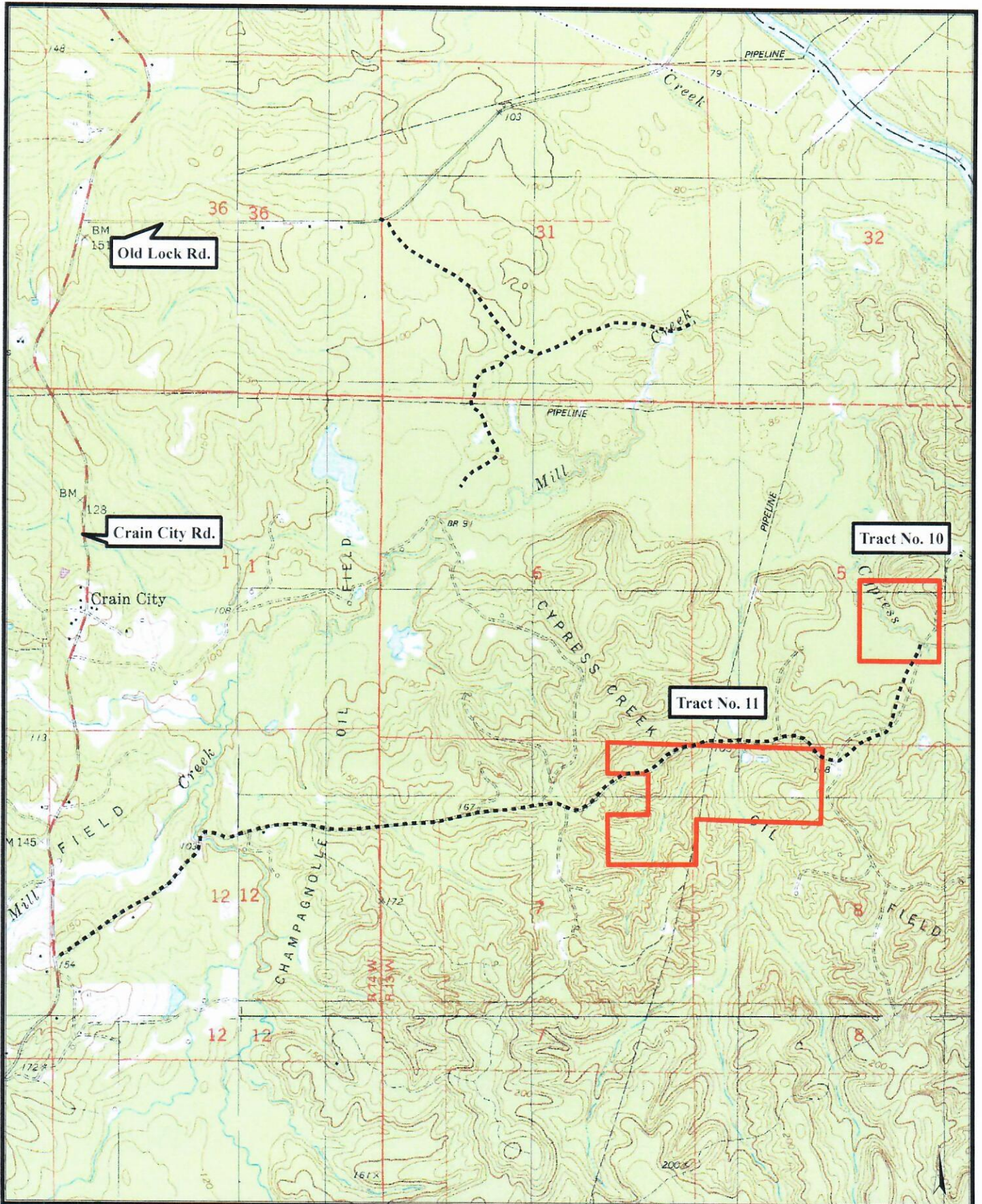
1 inch = 2,000 feet

PACKAGE 5



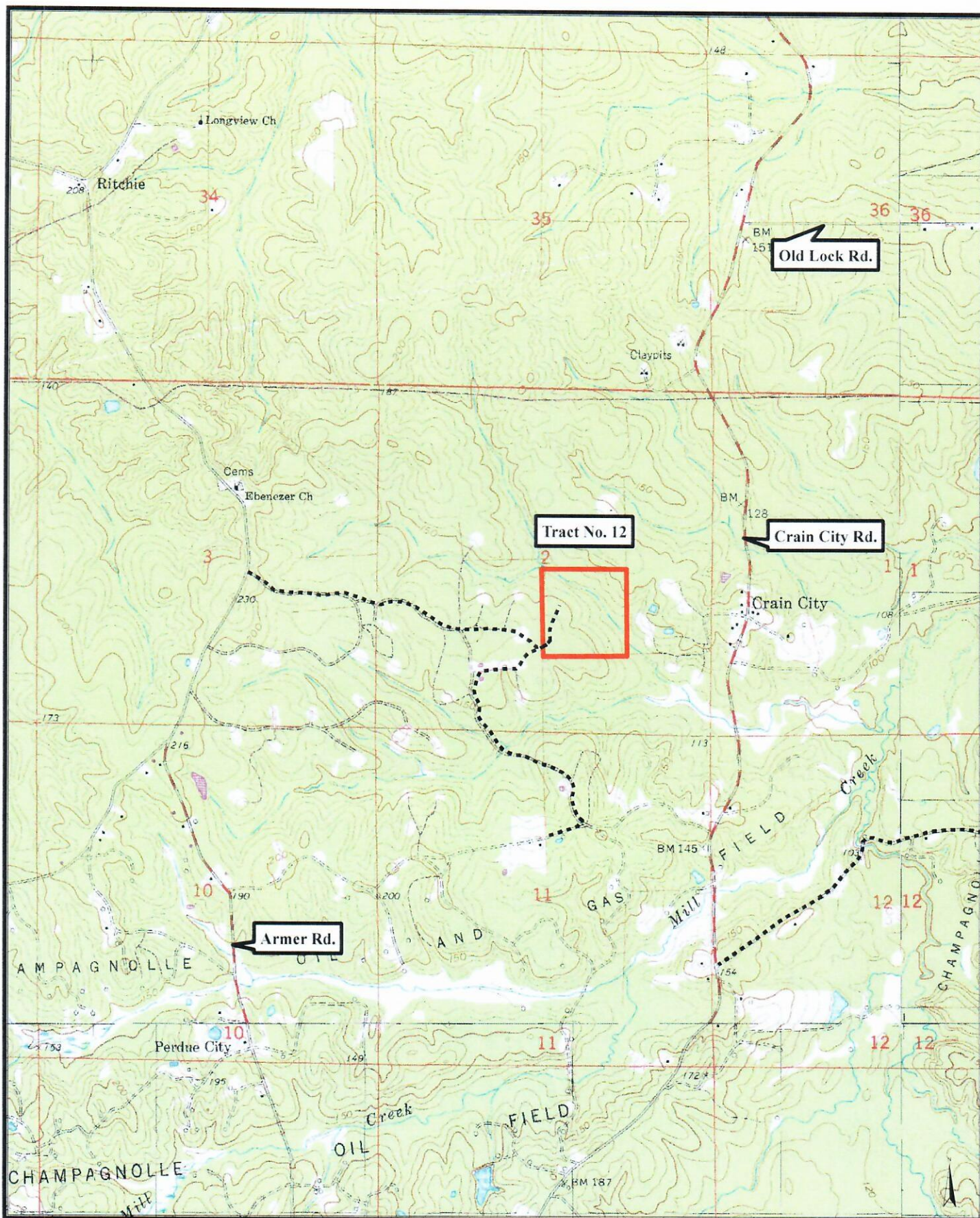
1 inch = 2,000 feet

PACKAGE 5



1 inch = 2,000 feet

PACKAGE 5



1 inch = 2,000 feet